

Cell Theory

Early Cell Research

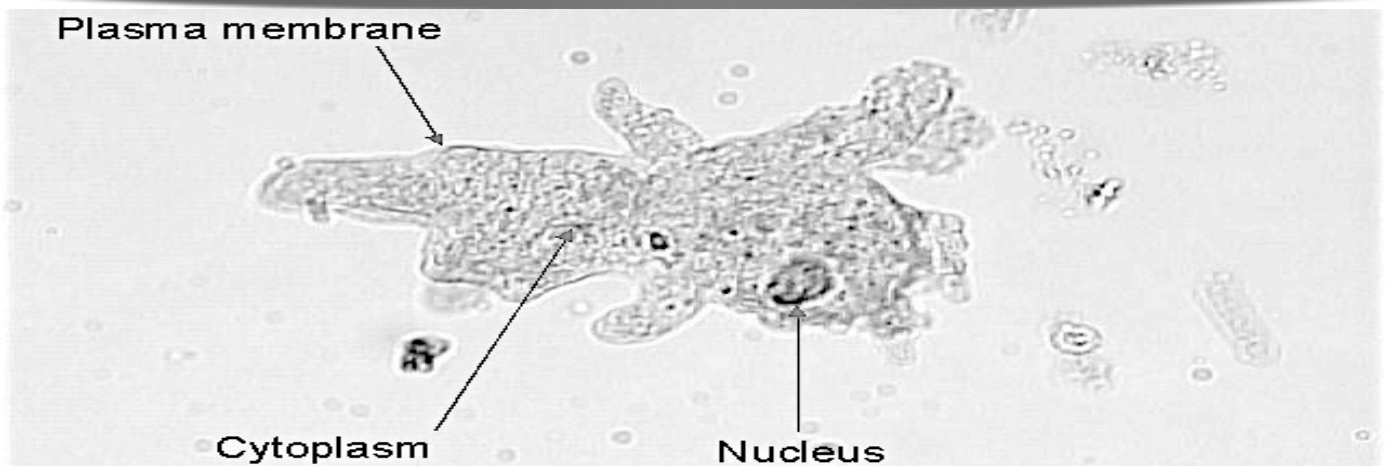
- Anton Van Leeuwenhoek - 1600's - created the first simple _____.
- Robert Hooke - 1665 - gave " _____ " their name
- Matthias Schleiden - 1838 - determined that all _____ are made of cells.
- Theodor Schwann - 1839 - determined that all _____ are made of cells.
- Rudolf Virchow -1855- determined that all cells _____ from pre-existing cells.

The Cell Theory

- 1.
- 2.
- 3.

Basic Cell Structures

- All Cells Have:
 - A cell membrane -
 - Cytoplasm -



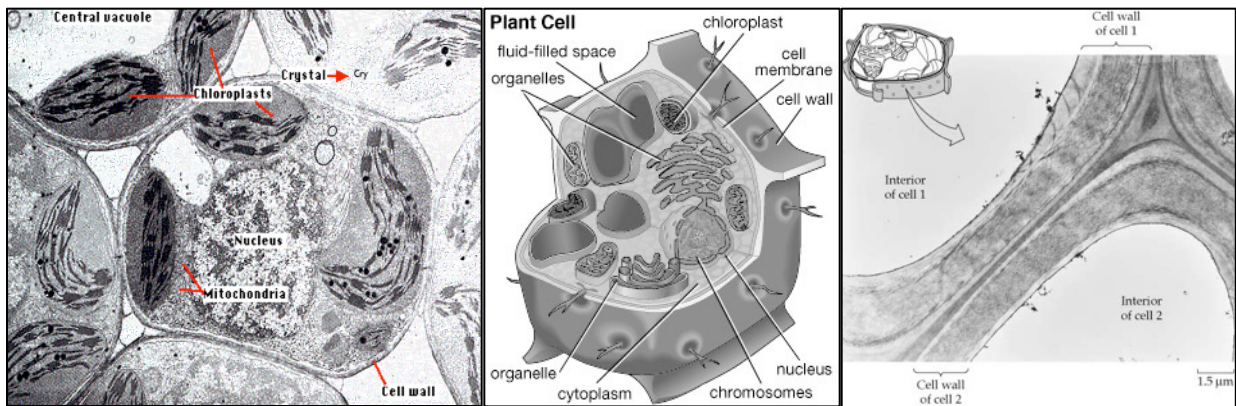
Some cells have:

* Cell wall:

Found in plants, fungi, and bacteria (NOT _____).

* Nucleus:

* Organelles - ("little organs"):



Two types of organisms

• Prokaryotes -

-Most are small, _____ organisms.

-Includes:

• Eukaryotes -

-Most are large, _____ organisms.

-Includes: